

1. Student Enrollment

	AY		SCH			AY		SCH			AY		SCH			AY	
	SCH	FTE	2011-2012			SCH	FTE	2012-2013			SCH	FTE	Current year (2013-2014) - Actual			SCH	FTE
	2010/2011	2010/2011	Summer 2011 Final	Fall 2011 Final	Spring 2012 Final	2011/2012	2011/2012	Summer 2012 Final	Fall 2012 Final	Spring 2013 Final	2012/2013	2012/2013	Summer 2013 Final	Fall 2013 Final	Spring 2014 Preliminary	2013/2014	2013/2014
<b>Arts &amp; Sciences</b>																	
Lower Level	277,088	6,927	35,315	124,296	105,224	264,835	6,621	32,612	123,915	107,795	264,322	6,608	31,983	125,537	110,687	268,207	6,705
Upper Level	195,108	4,878	25,492	83,696	86,563	195,751	4,894	24,125	86,098	85,842	196,065	4,902	22,477	82,878	83,737	189,092	4,727
Grad I	19,316	604	2,879	7,662	7,445	17,986	562	2,305	7,284	6,853	16,442	514	2,123	7,174	6,381	15,678	490
Grad II	16,940	529	2,796	7,506	7,184	17,486	546	2,829	7,518	7,241	17,588	550	2,633	7,083	7,015	16,731	523
<b>Total</b>	<b>508,452</b>	<b>12,938</b>	<b>66,482</b>	<b>223,160</b>	<b>206,416</b>	<b>496,058</b>	<b>12,623</b>	<b>61,871</b>	<b>224,815</b>	<b>207,731</b>	<b>494,417</b>	<b>12,573</b>	<b>59,216</b>	<b>222,672</b>	<b>207,820</b>	<b>489,708</b>	<b>12,445</b>
<b>Internal %</b>																	
Lower Level	54.5%	53.5%	53.1%	55.7%	51.0%	53.4%	52.5%	52.7%	55.1%	51.9%	53.5%	52.6%	54.0%	56.4%	53.3%	54.8%	53.9%
Upper Level	38.4%	37.7%	38.3%	37.5%	41.9%	39.5%	38.8%	39.0%	38.3%	41.3%	39.7%	39.0%	38.0%	37.2%	40.3%	38.6%	38.0%
Grad I	3.8%	4.7%	4.3%	3.4%	3.6%	3.6%	4.5%	3.7%	3.2%	3.3%	3.3%	4.1%	3.6%	3.2%	3.1%	3.2%	3.9%
Grad II	3.3%	4.1%	4.2%	3.4%	3.5%	3.5%	4.3%	4.6%	3.3%	3.5%	3.6%	4.4%	4.4%	3.2%	3.4%	3.4%	4.2%
<b>Total</b>	<b>100%</b>		<b>13.4%</b>	<b>45.0%</b>	<b>41.6%</b>	<b>100%</b>		<b>12.5%</b>	<b>45.5%</b>	<b>42.0%</b>	<b>100%</b>		<b>12.1%</b>	<b>45.5%</b>	<b>42.4%</b>	<b>100%</b>	
<b>Change from Prior Year</b>																	
Lower Level	2.1%		-7.0%	-3.5%	-4.6%	-4.4%		-7.7%	-0.3%	2.4%	-0.2%		-1.9%	1.3%	2.7%	1.5%	
Upper Level	2.9%		-4.0%	-0.9%	2.9%	0.3%		-5.4%	2.9%	-0.8%	0.2%		-6.8%	-3.7%	-2.5%	-3.6%	
Grad I	-16.3%		-7.9%	-7.8%	-5.5%	-6.9%		-19.9%	-4.9%	-8.0%	-8.6%		-7.9%	-1.5%	-6.9%	-4.6%	
Grad II	35.7%		10.3%	2.5%	1.4%	3.2%		1.2%	0.2%	0.8%	0.6%		-6.9%	-5.8%	-3.1%	-4.9%	
<b>Total</b>	<b>2.4%</b>		<b>-5.3%</b>	<b>-2.5%</b>	<b>-1.4%</b>	<b>-2.4%</b>		<b>-6.9%</b>	<b>0.7%</b>	<b>0.6%</b>	<b>-0.3%</b>		<b>-4.3%</b>	<b>-1.0%</b>	<b>0.0%</b>	<b>-1.0%</b>	

Fall Student Headcount by Residency

	Undergraduate					Graduate					Total				
	In-State		Out-State		Total UG	In-State		Out-State		Total Grad	In-State		Out-State		Total
	Headcount	%	Headcount	%		Headcount	%	Headcount	%		Headcount	%	Headcount	%	
Fall 2009	13,582	97%	381	3%	13,963	1,502	83%	297	17%	1,799	15,084	96%	678	4%	15,762
Fall 2010	13,875	97%	438	3%	14,313	1,460	79%	391	21%	1,851	15,335	95%	829	5%	16,164
Fall 2011	13,701	97%	492	3%	14,193	1,392	74%	482	26%	1,874	15,093	94%	974	6%	16,067
Fall 2012	13,465	95%	635	5%	14,100	1,264	71%	523	29%	1,787	14,729	93%	1,158	7%	15,887
Fall 2013	13,456	95%	731	5%	14,187	1,169	68%	561	32%	1,730	14,625	92%	1,292	8%	15,917

Fall Student Headcount Trends

	Undergraduate	Masters	Doctoral Research	Total
Fall 2009	13,963	1,049	750	15,762
Fall 2010	14,313	1,005	846	16,164
Fall 2011	14,193	955	919	16,067
Fall 2012	14,100	874	913	15,887
Fall 2013	14,187	846	884	15,917

**Fall Student Headcount Percentages (Full-Time/Part-Time)**

	UnderGraduate			Graduate			Total		
	Full-Time	Part-Time	Total	Full-Time	Part-Time	Total	Full-Time	Part-Time	Total
Fall 2009	10,780	3,183	13,963	1,045	754	1,799	11,825	3,937	15,762
Fall 2010	11,234	3,079	14,313	1,160	691	1,851	12,394	3,770	16,164
Fall 2011	11,279	2,914	14,193	1,197	677	1,874	12,476	3,591	16,067
Fall 2012	11,407	2,693	14,100	1,169	618	1,787	12,576	3,311	15,887
Fall 2013	11,450	2,737	14,187	1,143	587	1,730	12,593	3,324	15,917

	UnderGraduate		Graduate		Total	
	% Full-Time	% Part-Time	% Full-Time	% Part-Time	% Full-Time	% Part-Time
Fall 2009	77%	23%	58%	42%	75%	25%
Fall 2010	78%	22%	63%	37%	77%	23%
Fall 2011	79%	21%	64%	36%	78%	22%
Fall 2012	81%	19%	65%	35%	79%	21%
Fall 2013	81%	19%	66%	34%	79%	21%

**Tuition and Waiver**

Arts	Gross Revenue	Total Waivers	Net Revenue
<b>FY 11</b>			
Total Undegraduate	\$ 5,427,973	\$ (190,130)	\$ 5,237,842
Total Graduate	\$ 2,228,648	\$ (590,110)	\$ 1,638,537
Grand Total	\$ 7,656,620	\$ (780,241)	\$ 6,876,380
<b>FY 12</b>			
Total Undegraduate	\$ 6,288,283	\$ (202,856)	\$ 6,085,427
Total Graduate	\$ 2,345,691	\$ (636,764)	\$ 1,708,926
Grand Total	\$ 8,633,974	\$ (839,620)	\$ 7,794,354
<b>FY 13</b>			
Total Undegraduate	\$ 7,090,098	\$ (260,551)	\$ 6,829,547
Total Graduate	\$ 2,524,435	\$ (787,630)	\$ 1,736,805
Grand Total	\$ 9,614,533	\$ (1,048,181)	\$ 8,566,352
<b>FY 14 (Estimated)</b>			
Total Undegraduate	\$ 6,660,951	\$ (244,781)	\$ 6,416,170
Total Graduate	\$ 2,629,651	\$ (820,457)	\$ 1,809,193
Grand Total	\$ 9,290,601	\$ (1,065,238)	\$ 8,225,363
<b>FY 15 (Estimated)</b>			
Total Undegraduate	\$ 7,046,617	\$ (258,953)	\$ 6,787,664
Total Graduate	\$ 2,781,907	\$ (867,962)	\$ 1,913,945
Grand Total	\$ 9,828,524	\$ (1,126,915)	\$ 8,701,609

Student Flow

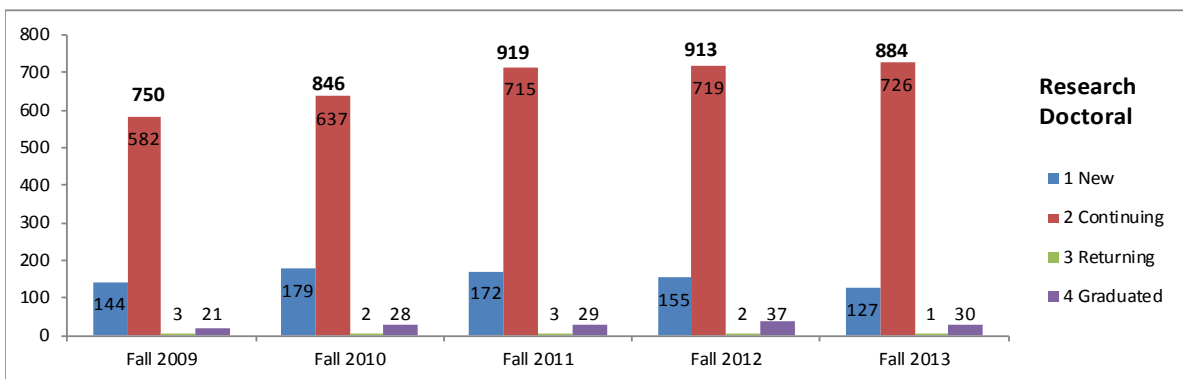
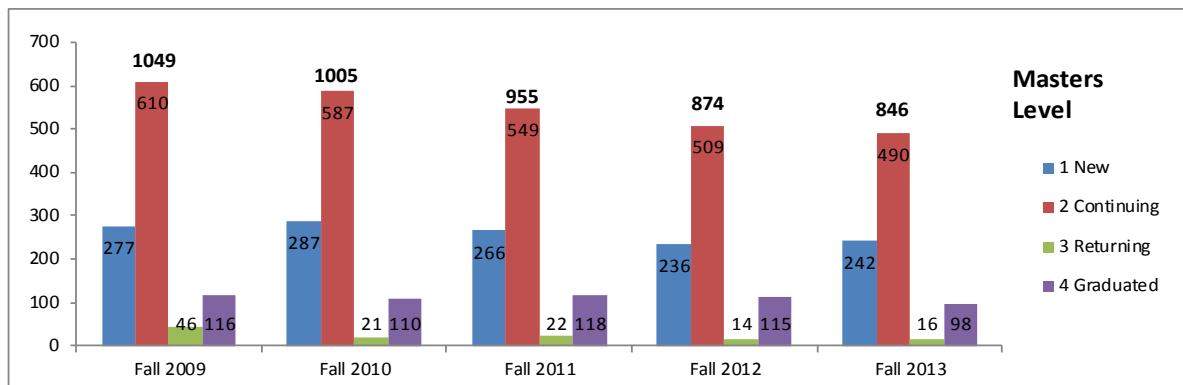
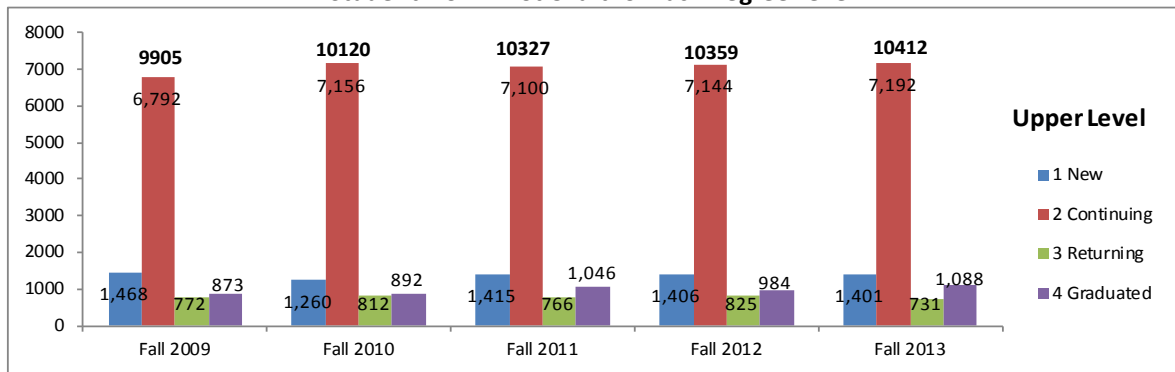
Arts and Sciences

		2009-10	2010-11	2011-12	2012-13	2013-14*
<b>Annual Unduplicated Headcounts</b>	Undergraduate	16,051	16,485	16,462	16,349	16,133
	Master	1,315	1,254	1,200	1,068	1,011
	Research Doctoral	809	923	980	1,004	952
	<b>Total</b>	<b>18,175</b>	<b>18,662</b>	<b>18,642</b>	<b>18,421</b>	<b>18,096</b>

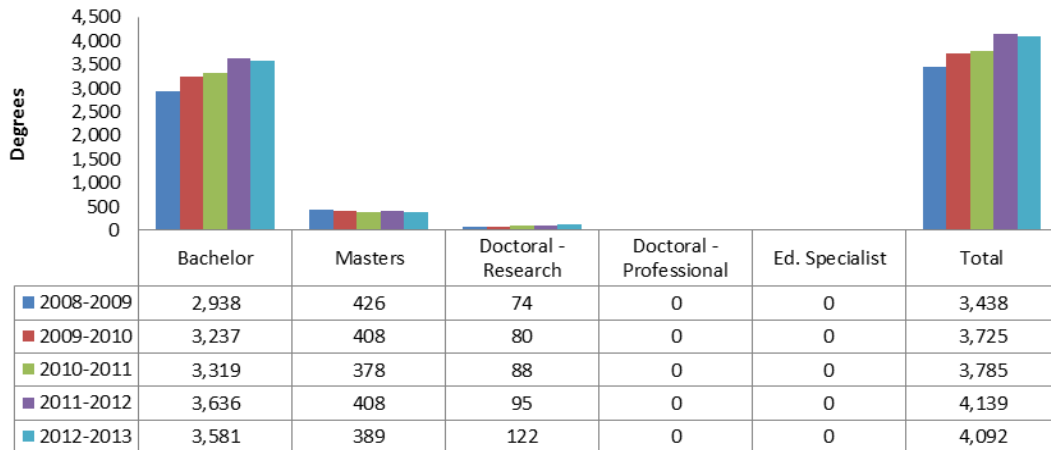
Source: USF InfoCenter

\*For 2013-14 annual unduplicated headcounts, spring 2013 data is based on preliminary benchmark

Student Flow Pivot Chart for Each Degree Level



**Degrees Awarded Trends**

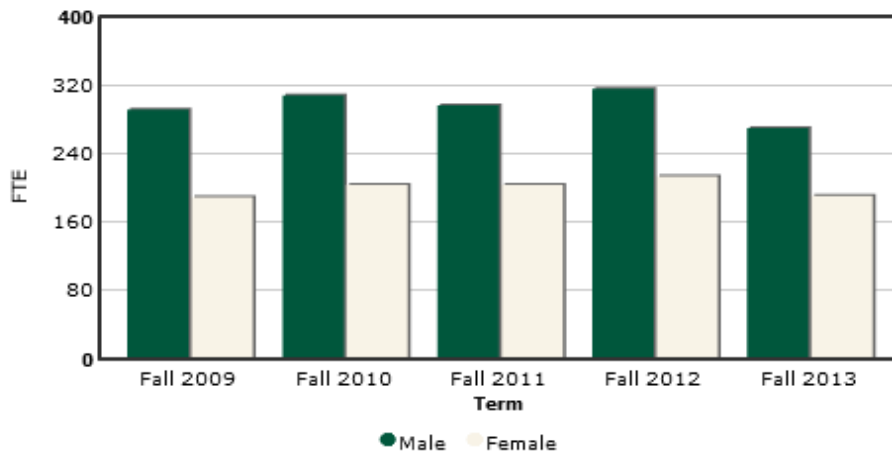


**Degree Awarded by Areas of Strategic Emphasis**

Strategic Emphasis Group		2008-2009	2009-2010	2010-2011	2011-2012	2012-2013	2013-2014
Globalization	Bachelor	391	412	428	495	449	247
	Doctoral - Research	6	8	6	13	18	8
	Masters	35	45	43	54	61	25
Health	Bachelor	20	9	8	10	7	10
	Masters	28	0	0	0	0	0
STEM	Bachelor	838	927	963	1,197	1,278	639
	Doctoral - Research	23	38	44	46	64	29
	Masters	50	60	51	68	69	34

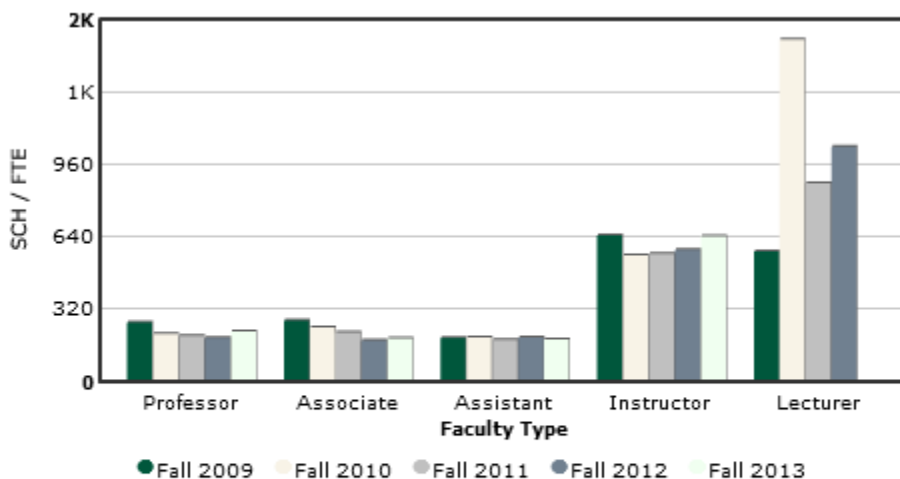
**2. Instructional Productivity**

**Fall Instructional Faculty FTE**



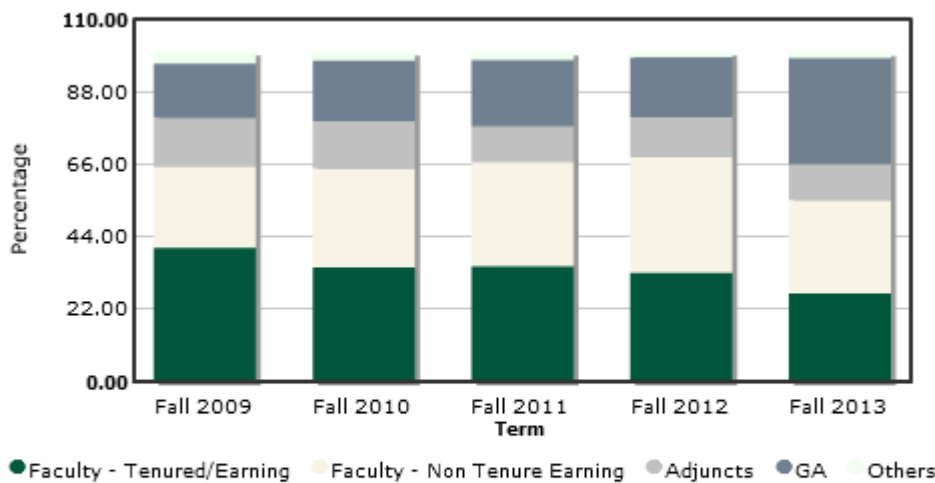
TERM	MALE	FEMALE	TOTAL	DETAIL
FALL 2009	290.87	188.83	479.70	<a href="#">DETAIL</a>
FALL 2010	307.69	203.02	510.71	<a href="#">DETAIL</a>
FALL 2011	296.02	203.50	499.52	<a href="#">DETAIL</a>
FALL 2012	315.52	213.25	528.77	<a href="#">DETAIL</a>
FALL 2013	269.63	190.31	459.94	<a href="#">DETAIL</a>

Fall SCH Per Ranked Instructional FTE



TERM	PROFESSOR	ASSOCIATE	ASSISTANT	INSTRUCTOR	LECTURER
FALL 2009	261.58	269.67	192.26	644.87	573.50
FALL 2010	208.85	237.96	194.19	555.76	1509.00
FALL 2011	201.01	216.39	183.87	563.01	874.67
FALL 2012	192.76	180.97	194.60	579.88	1036.50
FALL 2013	221.10	190.15	185.23	640.23	0.00

Percentage of SCH by Instructor Type



TERM	TEN/EARN	NON TEN	ADJUNCTS	GA	OTHER
FALL 2009	40.58	24.62	14.77	16.44	3.59
FALL 2010	34.66	29.98	14.31	18.39	2.66
FALL 2011	34.90	31.69	10.93	20.02	2.46
FALL 2012	33.03	35.01	12.16	18.15	1.65
FALL 2013	26.78	28.31	10.83	32.15	1.92

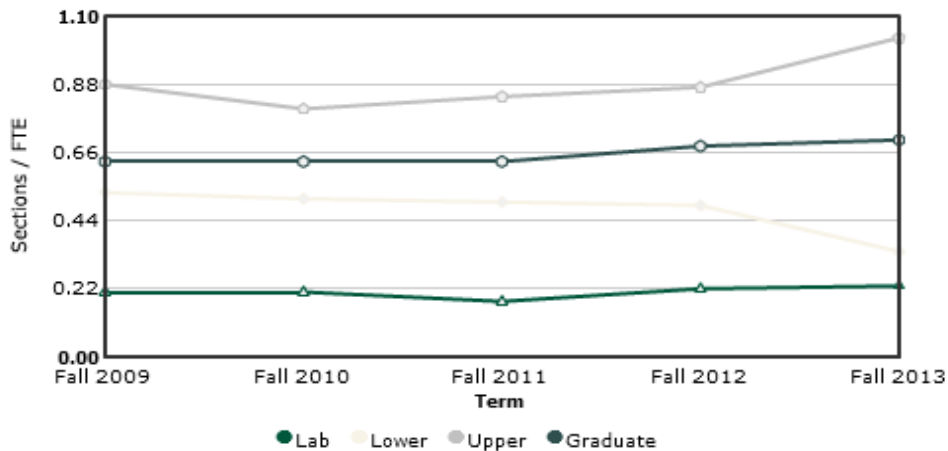
Undergraduate SCH by Full-Time Faculty for Fall 2011, 2012 and 2013\*\*

12-Arts & Sciences Department	Fall 2011			Fall 2012			Fall 2013		
	Total UG SCH	UG SCH by FT Faculty	Percent by FT Faculty	Total UG SCH	UG SCH by FT Faculty	Percent by FT Faculty	Total UG SCH	UG SCH by FT Faculty	Percent by FT Faculty
1201 Arts And Sciences - Dean	679	679	100.0%	1,650	1,650	100.0%	626	518	82.7%
1202 Africana Studies	2,334	2,034	87.1%	1,908	1,554	81.4%	3,486	1,071	30.7%
1205 Anthropology	6,441	2,941	45.7%	6,889	2,963	43.0%	8,239	3,882	47.1%
1209 Biology	216	216	100.0%						
1210 Cell, Molecular & Micro Biology	11,054	10,298	93.2%	13,275	10,380	78.2%	15,446	9,422	61.0%
1211 Integrative Biology	5,527	4,835	87.5%	6,018	5,922	98.4%	6,768	4,835	71.4%
1213 Chemistry	20,218	17,064	84.4%	21,108	18,212	86.3%	25,029	18,280	73.0%
1217 Communication	7,223	3,473	48.1%	7,049	3,477	49.3%	8,813	3,388	38.4%
1223 English	22,355	10,730	48.0%	21,807	10,394	47.7%	22,574	7,997	35.4%
1225 Geology	3,372	2,918	86.5%	3,077	2,562	83.3%			
1227 Geography	7,957	4,187	52.6%	7,745	4,516	58.3%			
1230 School of Geosciences							12,628	6,812	53.9%
1231 Govt & International Affairs	7,664	6,064	79.1%	6,880	4,260	61.9%	7,542	5,017	66.5%
1235 History	6,253	5,938	95.0%	5,326	5,022	94.3%	7,491	4,026	53.7%
1237 Humanities & Cultural Studies	4,261	2,290	53.7%	4,384	2,728	62.2%	4,750	3,658	77.0%
1239 Women's & Gender Studies	2,595	483	18.6%	1,772	1,217	68.7%	2,193	1,659	75.6%
1241 World Languages	15,435	8,698	56.4%	14,427	8,553	59.3%	24,179	8,865	36.7%
1247 Mass Communications	5,080	3,892	76.6%	5,404	4,389	81.2%	6,455	4,975	77.1%
1248 Library & Information Science	1,221	1,221	100.0%	1,668	1,443	86.5%	1,957	1,669	85.3%
1249 Mathematics & Statistics	25,841	13,088	50.6%	26,095	13,822	53.0%	37,350	15,854	42.4%
1251 Philosophy	6,042	2,856	47.3%	6,266	2,940	46.9%	8,571	2,334	27.2%
1253 Physics	9,947	8,457	85.0%	10,904	9,299	85.3%	11,826	10,147	85.8%
1255 Psychology	14,732	8,808	59.8%	14,368	8,242	57.4%	13,440	9,328	69.4%
1256 School of Public Affairs	168	168	100.0%	1,385	1,385	100.0%	860	410	47.7%
1259 Religious Studies	6,018	4,374	72.7%	5,139	4,175	81.2%	5,428	4,159	76.6%
1263 Sociology	9,153	6,868	75.0%	9,238	6,237	67.5%	8,321	4,646	55.8%
1285 Economics	7,422	6,018	81.1%	6,846	5,670	82.8%	12,858	5,127	39.9%
<b>12-Arts &amp; Sciences Total</b>	<b>209,208</b>	<b>138,598</b>		<b>210,628</b>	<b>141,011</b>		<b>256,828</b>	<b>138,079</b>	

\* Tampa Only

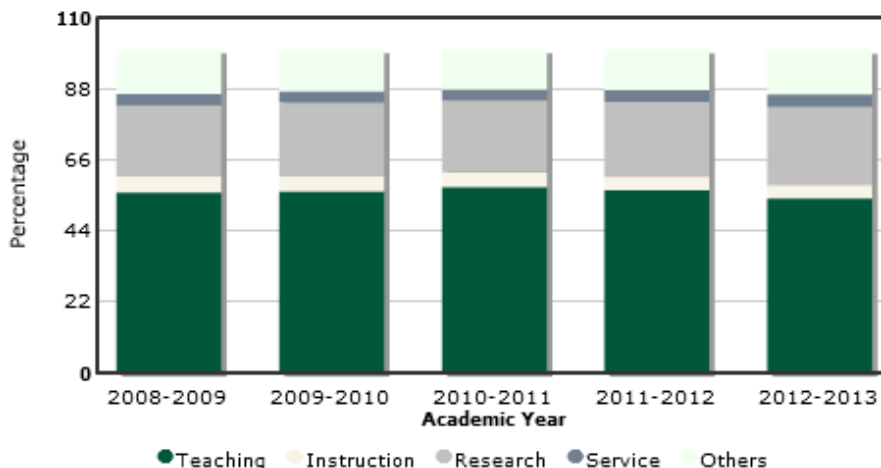
\*\* Includes payplans: 01-Extra State Compensation, 02-Phased Retirement, 06-Faculty Adjunct, 21-A&P, and 22-Faculty

Fall Sections Per Tenured/Earning Faculty FTE



TERM	LAB	LOWER	UPPER	GRAD	TOTAL
FALL 2009	0.21	0.53	0.88	0.63	2.24
FALL 2010	0.21	0.51	0.80	0.63	2.14
FALL 2011	0.18	0.50	0.84	0.63	2.15
FALL 2012	0.22	0.49	0.87	0.68	2.25
FALL 2013	0.23	0.34	1.03	0.70	2.31

Percentage of Activity for Ranked Faculty by Activity Type



ACADEMIC YEAR	TEACHING	INSTRUCTION	RESEARCH	SERVICE	OTHER
2008-2009	55.75	4.95	22.01	3.55	13.74
2009-2010	55.98	4.79	22.84	3.43	12.96
2010-2011	57.49	4.61	22.14	3.45	12.31
2011-2012	56.54	4.04	23.25	3.60	12.57
2012-2013	53.92	4.08	24.27	3.84	13.88

Faculty Activity Groupings

Teaching	Credit bearing course delivery, supervision of teaching and interns, directed study, thesis, dissertation
Instruction	Advising, course prep, curriculum development, non-credit instruction, co-op and teaching medical residents
Research	Funded Research, departmental research
Service	Public service, state mandated service, clinical service
Other	University governance, academic administration, release, paid patient care, release UFF, leave of absence

### 3. Space Utilization, Class Size and Sections by Start Time

#### Class Size - Fall 2013

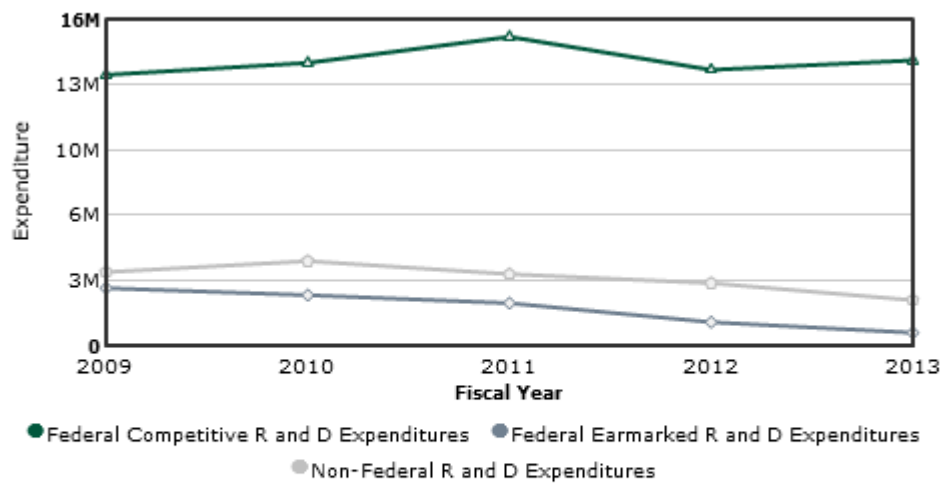
Sections – Class, Lab, and Discussion									
Enrollment	0 - 9	10 - 19	20 - 29	30 – 39	40 - 49	50 - 99	100 +	Total Sections	Mean Enrollment
Undergraduate	7%	15%	46%	11%	10%	8%	4%	1499	44.4
Graduate	62%	28%	8%	0%	1%	1%	0%	277	10.89
TOTAL	15%	17%	40%	10%	8%	7%	3%	1776	39.17

#### Classroom Sections by Start Time - Fall 2013

Effective Sections Offered																
Day and Time	8 AM	9 AM	10 AM	11 AM	Morning Sections	12 PM	1 PM	2 PM	3 PM	4 PM	5 PM	Afternoon Sections	6 PM	7 PM	8 PM	Evening Sections
Monday	30	67	61	59	217	55	4	61	59	43	9	231	53	3	2	58
Tuesday	37	107	10	110	264	100	1	104	63	14	49	331	61	0	6	67
Wednesday	29	69	61	58	217	55	3	64	64	46	12	244	68	3	2	73
Thursday	34	109	10	114	267	106	0	106	62	13	39	326	46	0	6	52
Friday	29	54	62	57	202	47	2	25	4	0	1	79	0	0	0	0
Total	159	406	204	398	1167	363	10	360	252	116	110	1211	228	6	16	250

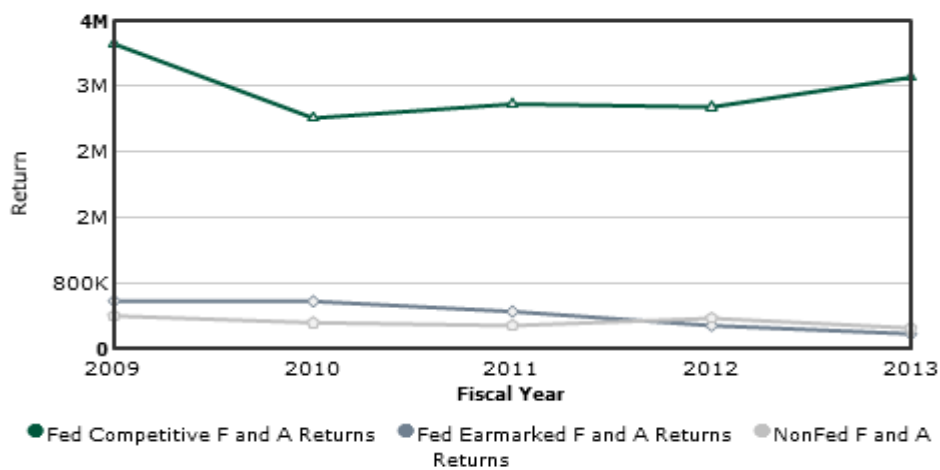
4. Research Productivity

Federal and Non-Federal R and D Expenditures



FISCAL YEAR	FEDERAL COMPETITIVE AMOUNT (\$)	FEDERAL EARMARKED AMOUNT (\$)	NON-FEDERAL AMOUNT (\$)	TOTAL R AND D AMOUNT (\$)
2009	13,274,388	2,816,398	3,623,631	19,714,417
2010	13,861,589	2,491,499	4,148,881	20,501,969
2011	15,148,220	2,088,054	3,503,504	20,739,779
2012	13,532,307	1,152,491	3,070,857	17,755,654
2013	13,992,105	634,602	2,243,342	16,870,049

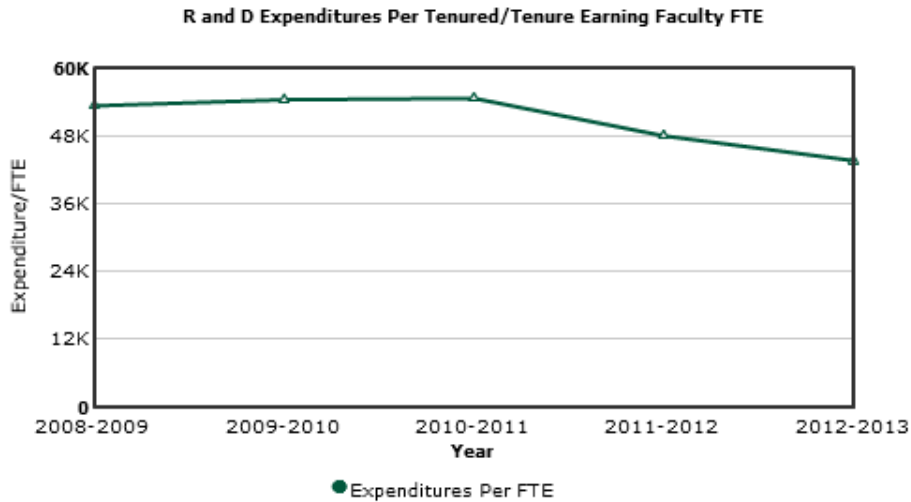
F and A Returns



FISCAL YEAR	FED COMPETITIVE AMOUNT (\$)	FED EARMARKED AMOUNT (\$)	NON FED AMOUNT (\$)	TOTAL F AND A AMOUNT (\$)
2009	3,716,317	578,997	397,665	4,692,979
2010	2,812,513	576,569	313,787	3,702,869
2011	2,981,514	451,213	279,181	3,711,908
2012	2,948,504	279,363	370,529	3,598,396
2013	3,309,369	181,975	248,608	3,739,952



Percentage of F&A within R&D				
Fiscal Year	Fed Comp Amount (%)	Fed Earmarked Amount (%)	Non-Fed Amount (%)	Total Amount (%)
2009	28.00	20.56	10.97	23.80
2010	20.29	23.14	7.56	18.06
2011	19.68	21.61	7.97	17.90
2012	21.79	24.24	12.07	20.27
2013	23.65	28.68	11.08	22.17



YEAR	EXP/FTE (\$)
2008-2009	53,253.81
2009-2010	54,319.92
2010-2011	54,644.51
2011-2012	47,999.93
2012-2013	43,592.98

**Proposals and Awards**

Fiscal year	Proposals	Proposals % Change	Awards	Awards % Change
2009	314	0%	110	0%
2010	361	14%	114	3%
2011	347	-3%	119	4%
2012	335	-3%	114	-4%
2013	288	-14%	109	-4%
* 2014	282	-2%	96	-11%

Fiscal year	Requested Amount (\$)	Req % Change	Awarded Amount (\$)	Awards % Change
2009	120,183,484	0%	23,225,305	0%
2010	126,175,365	5%	21,999,031	-5%
2011	129,496,029	3%	18,647,711	-15%
2012	143,365,463	11%	18,971,814	2%
2013	113,747,790	-21%	16,119,358	-15%
* 2014	109,062,872	-4%	13,689,467	-15%

\* 2014 Award Amounts are year-to-date, as of May 2014.

## 5. Post-Doctoral Appointments

### Postdocs:

	Fall 2009	Fall 2010	Fall 2011	Fall 2012	Fall 2013
Arts & Sciences	56	55	58	56	60

## 6. National Academy Members and Faculty Awards

Faculty	Award	Award Year	College	Award Type
Colin Heydt	Institute for Advanced Study Fellowship	2013-2014	CAS	AAU
Sari Altschuler	Hench Post-Dissertation Fellowship	2013-2014	CAS	AAU
Gordon Fox	AAAS Fellow	2013-2014	CAS	AAU, NRC
Mark Goldman	AAAS Fellow	2013-2014	CAS	AAU, NRC
Robert Byrne	AAAS Fellow	2013-2014	CAS	AAU, NRC
Sheramy Bundrick	Rome Prize	2013-2014	CAS	AAU, NRC
Jiangfeng Zhou	Sloan Research Fellowship	2013-2014	CAS	AAU, TARU, NRC
Robin Danzak	Core Fulbright American Scholars	2013-2014	CAS	AAU, TARU, NRC
Shengqian Ma	NSF CAREER Award	2013-2014	CAS	AAU, TARU, NRC
Jay Sokolovsky	Robert B Textor and Family Prize for Excellence in Anticipatory Anthropology	2013-2014	CAS	NRC
Tammy Allen	APS Fellow	2013-2014	CAS	NRC
Camilla Vasquez	Fulbright Specialist	2013-2014	CAS	Others
Christie Rinck	NACADA Outstanding Advising Award	2013-2014	CAS	Others
Christine Probes	Ordre des Palmes Academiques	2013-2014	CAS	Others
Colin Heydt	NEH Summer Stipends Awards	2013-2014	CAS	Others
Frances Ramos	Michael C. Meyer Award	2013-2014	CAS	Others
George Nolas	American Physical Society Fellow	2013-2014	CAS	Others
Jane Jorgenson	Gender Scholar of the Year Award	2013-2014	CAS	Others
Kenneth Cissna	Michael M. Osborn Teacher-Scholar Award	2013-2014	CAS	Others
Kiki Caruson	Fulbright International Education Administrators Program	2013-2014	CAS	Others
Manoug Manougian	Distinguished Scholar Award	2013-2014	CAS	Others
Matthias Batzill	Hans Fischer Junior Fellowship	2013-2014	CAS	Others
Paul Spector	Thomas A. Mahoney Mentoring Award	2013-2014	CAS	Others
Thomas Williams	Scholarly Editions and Translations Award	2013-2014	CAS	Others
Earl McCoy	AAAS Fellow	2012-2013	CAS	AAU, NRC
George Nolas	AAAS Fellow	2012-2013	CAS	AAU, NRC
James Garey	AAAS Fellow	2012-2013	CAS	AAU, NRC
John Skvoretz	AAAS Fellow	2012-2013	CAS	AAU, NRC
Lorena Madrigal	AAAS Fellow	2012-2013	CAS	AAU, NRC
Peter Stiling	AAAS Fellow	2012-2013	CAS	AAU, NRC

Faculty	Award	Award Year	College	Award Type
Richard Pollenz	AAAS Fellow	2012-2013	CAS	AAU, NRC
Susan Bell	AAAS Fellow	2012-2013	CAS	AAU, NRC
Andreas Muller	NSF CAREER Award	2012-2013	CAS	AAU, TARU, NRC
Frances Ramos	National Endowment for the Humanities (NEH) Fellows	2012-2013	CAS	AAU, TARU, NRC
Inna Ponomareva	NSF CAREER Award	2012-2013	CAS	AAU, TARU, NRC
Pratyusha Basu	Core Fulbright American Scholars	2012-2013	CAS	AAU, TARU, NRC
Arthur Bochner	NCA Distinguished Scholar Award	2012-2013	CAS	NRC
Carolyn Ellis	Lifetime Achievement Award in Qualitative Inquiry	2012-2013	CAS	Others
David Rabson	AAAS Science & Technology Policy Fellow	2012-2013	CAS	Others
Kalanithy Vairavamoorthy	Water Hero	2012-2013	CAS	Others
Kathryn Arthur	Gordon R Willey Prize	2012-2013	CAS	Others
Manoug Manougian	Excellence in Teaching Award	2012-2013	CAS	Others
Robert Byrne	AGU Fellow	2012-2013	CAS	Others
Michael Zaworotko	AAAS Fellow	2011-2012	CAS	AAU, NRC
Robert Tykot	AAAS Fellow	2011-2012	CAS	AAU, NRC
Ella Schmidt	Core Fulbright American Scholars	2011-2012	CAS	AAU, TARU, NRC
Golfo Alexopoulos	National Endowment for the Humanities (NEH) Fellows	2011-2012	CAS	AAU, TARU, NRC
Heide Castaneda	Core Fulbright American Scholars	2011-2012	CAS	AAU, TARU, NRC
Sarah Kruse	Core Fulbright American Scholars	2011-2012	CAS	AAU, TARU, NRC
Wei Zhu	Core Fulbright American Scholars	2011-2012	CAS	AAU, TARU, NRC
Henry Mushinsky	Robert K. Johnson award	2011-2012	CAS	NRC
Myung Kim	OSA Fellowship	2011-2012	CAS	NRC
Roger Arieu	National Endowment for the Humanities Faculty Research Award	2011-2012	CAS	NRC
Henrietta Smith	ALA Corretta Scott King-Virgina Hamiton Award for Lifetime Achievement	2011-2012	CAS	Others
Karen Brown	Prairie Schooner Book Prize in Fiction	2011-2012	CAS	Others
Roger Arieu	Scholarly Editions and Translations Award	2011-2012	CAS	Others
Walter Borman	Gold Medal for Lifetime Achievement in the Application of Psychology	2011-2012	CAS	Others

**7. Fund Raising**

**GOAL vs. ATTAINMENT - FY 2012, FY2013, FY 2014 To Date**

College	FY 2012			FY 2013			FY 2014 to Date		
	Goal	Attainment	% Achieved	Goal	Attainment	% Achieved	Goal	Attainment	% Achieved
Arts and Sciences	\$1,641,000	\$1,132,679	69.0%	\$ 1,350,000	\$ 1,485,929	110.1%	\$ 1,600,000	\$ 497,958	31%

**FISCAL YEAR COMPARISON - FY 2013 & FY 2014**

College	FY 2013	FY 2014	% Change
	as of 3/22	as of 3/22	
Arts and Sciences	\$ 520,362	\$ 497,958	-4.31%

**UNSTOPPABLE CAMPAIGN PROGRESS TO DATE**

College	Campaign	Progress	% of Goal
	Goal	to Date	Achieved
Arts and Sciences	\$19,311,125	\$11,803,908	61%

Source: USF Foundation, College Fundraising Reports as of 3/22/14

**8. Resources & Budget**

**Arts and Sciences, Fall Employee Headcount**

	<b>F2009</b>	<b>F2010</b>	<b>F2011</b>	<b>F2012</b>	<b>F2013</b>
<b>Instructional Faculty</b>					
Professor	146	152	146	143	140
Associate Professor	124	125	129	150	166
Assist Professor	132	130	115	103	116
Instructor	85	103	100	132	120
Lecturer	2	2	4	2	
Ranked Instructional Faculty	489	512	494	530	542
<b>Other &amp; Non-Instructional Faculty</b>					
Other & Non-Instructional Faculty	34	28	31	32	35
Faculty Adjunct	176	145	118	112	131
Graduate Assistant	814	879	888	900	884
A&P	53	61	71	73	78
USPS	105	99	99	101	92
OPS Other	98	59	57	72	72
Student Assistant	218	199	234	250	186
<b>Total</b>					
	<b>1,987</b>	<b>1,982</b>	<b>1,992</b>	<b>2,070</b>	<b>2,020</b>

<b>2011-12 Operating Budgets</b>						
<b>Arts &amp; Sciences</b>						
<b>Arts &amp; Sciences</b>						
<b>Combined E&amp;G and CF</b>	Budget	AA Pending Transfers	Expenses Actual & Planned	RSA	Expense Change	
<b>SALARIES (w/o benefits)</b>						
Instructional Faculty	43,555,058	0	43,459,516	95,542	2,254,895	5%
Instructional Adjunct	1,463,995	0	1,680,242	(216,247)	(300,455)	-15%
GA	12,275,436	0	11,928,111	347,325	1,538,465	15%
Non-Instructional Faculty	0	0	0	0	0	-
Non Instructional Staff	6,168,465	0	6,159,860	8,605	467,219	8%
Non Instructional OPS Other	779,980	0	756,640	23,340	65,156	9%
Subtotal	64,242,934	0	63,984,369	258,565	4,025,279	7%
<b>Fringe &amp; Awards/Bonus CF ONLY</b>						
Subtotal	13,759,908	0	13,324,891	435,017	(780,243)	-6%
<b>EXPENSE</b>						
Other Operating Expense	2,339,008	0	1,929,392	409,616	242,849	14%
Travel	867,553	0	652,139	215,414	10,553	2%
Equipment -OCO	1,121,426	0	1,041,167	80,259	71	0%
Library Resources	0	0	0	0	(808)	-100%
Financial Aid/Scholarships	171,793	0	79,527	92,266	(9,986)	-11%
Other	2,884,198	0	228,900	2,655,298	(143,992)	-39%
Subtotal	7,383,978	0	3,931,125	3,452,853	98,687	3%
<b>TOTAL E&amp;G and Carryforward</b>	<b>85,386,820</b>	<b>0</b>	<b>81,240,385</b>	<b>4,146,435</b>	<b>3,343,723</b>	<b>4%</b>
<b>2012-13 Operating Budgets</b>						
<b>Arts &amp; Sciences</b>						
<b>Arts &amp; Sciences</b>						
<b>Combined E&amp;G and CF</b>	Budget	AA Pending Transfers	Expenses Actual & Planned	RSA	Expense Change	
<b>SALARIES (w/o benefits)</b>						
Instructional Faculty	44,852,536	0	44,741,165	111,371	1,281,649	3%
Instructional Adjunct	1,407,247	0	1,646,364	(239,117)	(33,878)	-2%
GA	12,410,610	0	11,787,379	623,231	(140,732)	-1%
Non-Instructional Faculty	0	0	0	0	0	-
Non Instructional Staff	6,222,742	0	6,144,302	78,440	(15,558)	0%
Non Instructional OPS Other	725,686	0	725,512	174	(31,128)	-4%
Subtotal	65,618,821	0	65,044,722	574,098	1,060,353	2%
<b>Fringe &amp; Awards/Bonus CF ONLY</b>						
Subtotal	13,083,839	0	12,778,881	304,958	(546,010)	-4%
<b>EXPENSE</b>						
Other Operating Expense	2,399,269	0	1,674,244	725,025	(255,147)	-13%
Travel	1,028,333	0	659,052	369,281	6,914	1%
Equipment -OCO	1,425,446	0	1,146,698	278,748	105,531	10%
Library Resources	0	0	0	0	0	-
Financial Aid/Scholarships	194,026	0	92,262	101,764	12,735	16%
Other	(427,382)	0	335,429	(762,811)	106,529	47%
Subtotal	4,619,692	0	3,907,686	712,006	(23,439)	-1%
<b>TOTAL E&amp;G and Carryforward</b>	<b>83,322,352</b>	<b>0</b>	<b>81,731,290</b>	<b>1,591,063</b>	<b>490,905</b>	<b>1%</b>
<b>2013-14 Operating Budgets</b>						
<b>Arts &amp; Sciences</b>						
<b>Arts &amp; Sciences</b>						
<b>Combined E&amp;G and CF</b>	Budget	AA Pending Transfers	Expenses Actual & Planned	RSA	Expense Change	
<b>SALARIES (w/o benefits)</b>						
Instructional Faculty	45,942,324	43,788	45,849,810	136,302	1,108,645	3%
Instructional Adjunct	1,270,157	0	1,913,884	(643,727)	267,520	16%
GA	12,041,389	0	12,425,639	(384,251)	638,260	5%
Non-Instructional Faculty	0	0	0	0	0	-
Non Instructional Staff	6,219,601	23,624	6,288,488	(45,263)	144,186	2%
Non Instructional OPS Other	1,232,972	0	519,903	713,069	(205,609)	-27%
Subtotal	66,706,443	67,412	66,997,724	(223,870)	1,953,002	3%
<b>Fringe &amp; Awards/Bonus CF ONLY</b>						
Subtotal	12,619,957	0	14,261,376	(1,641,419)	1,482,494	11%
<b>EXPENSE</b>						
Other Operating Expense	1,624,987	0	1,390,936	234,051	(283,308)	-15%
Travel	859,091	0	472,923	386,168	(186,129)	-29%
Equipment -OCO	98,681	0	69,841	28,840	(1,076,857)	-103%
Library Resources	56	0	0	56	0	-
Financial Aid/Scholarships	113,279	0	75,855	37,424	(16,407)	-21%
Other	1,368,773	0	249,716	1,119,058	(85,713)	-37%
Subtotal	4,064,867	0	2,259,271	1,805,596	(1,648,416)	-42%
<b>TOTAL E&amp;G and Carryforward</b>	<b>83,391,267</b>	<b>67,412</b>	<b>83,518,371</b>	<b>(59,692)</b>	<b>1,787,081</b>	<b>2%</b>

College of Arts & Sciences - 2010-2011

Instructor Grouping	Term Grouping	Faculty Group	Unique Record	Person Years (FTE)	SCH	%	SCH / FTE	Sal / SCH	Research Expenditures	Rsch / FTE	Term Salary w/ benefits		
Instructional Faculty	FL-SP	Professor	159	112	56,541	13.6%	506	\$337	8,544,466	76,502	19,035,518		
		Associate	132	90	53,801	13.0%	595	\$199	2,538,013	28,078	10,702,835		
		Assistant	137	97	49,271	11.9%	507	\$210	3,223,406	33,166	10,326,003		
		Instructor	121	76	111,313	26.8%	1,462	\$54	160,776	2,111	5,955,637		
		Lecturer	1	1	2,643	0.6%	3,671	\$27	0	0	71,476		
		Adjunct	155	34	53,303	12.8%	1,583	\$26	0	0	1,403,828		
		Grad Asst	965	307	87,698	21.1%	286	\$134	0	0	11,723,089		
		Misc Other	1	0	753	0.2%	2,035	\$42	0	0	31,834		
		<b>FL-SP Total</b>			<b>1,671</b>	<b>717</b>	<b>415,322</b>	<b>100.0%</b>	<b>579</b>	<b>\$143</b>	<b>14,466,661</b>	<b>20,174</b>	<b>59,250,220</b>
		SUMM											
		Professor	117	19	13,145	19.5%	698	\$221	0		2,901,270		
		Associate	88	13	11,272	16.7%	885	\$125	0		1,413,108		
		Assistant	94	13	7,909	11.7%	615	\$151	0		1,191,251		
		Instructor, Lect	55	10	14,504	21.5%	1,456	\$51	0		738,149		
		Adjunct	79	7	10,469	15.5%	1,498	\$31	0		320,202		
		Grad Asst	419	40	10,233	15.2%	258	\$169	0		1,730,424		
<b>SUMM TOTAL</b>			<b>852</b>	<b>101</b>	<b>67,532</b>	<b>100.0%</b>	<b>668</b>	<b>\$123</b>	<b>0</b>		<b>8,294,404</b>		
AY TOTAL			1,767	818	482,854		590	\$140	14,466,661		67,544,624		
NonInstructional Faculty	AY TOTAL	All	1,389	442	183,845		416	\$109	342,711		20,037,227		

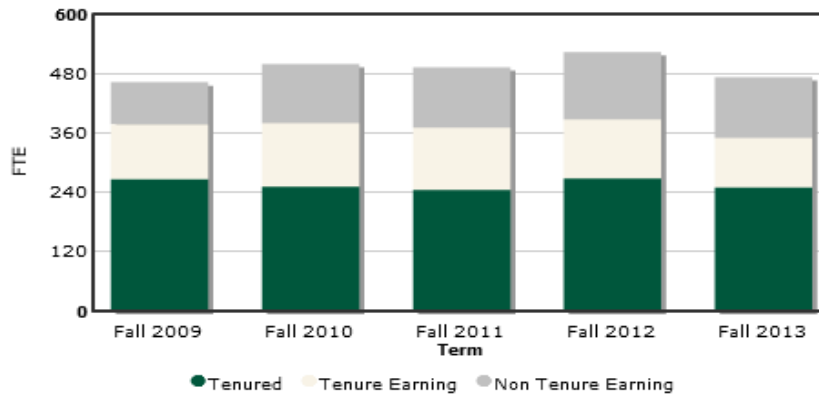
College of Arts & Sciences - 2011-2012

Instructor Grouping	Term Grouping	Faculty Group	Unique Record	Person Years (FTE)	SCH	%	SCH / FTE	Sal / SCH	Research Expenditures	Rsch / FTE	Term Salary w/ benefits		
Instructional Faculty	FL-SP	Professor	153	107	54,160	13.1%	504	\$337	6,626,257	61,651	18,255,095		
		Associate	138	96	51,915	12.6%	544	\$226	4,418,539	46,258	11,726,081		
		Assistant	124	88	43,196	10.4%	490	\$221	2,278,817	25,866	9,544,921		
		Instructor	128	76	117,746	28.5%	1,541	\$51	292,803	3,833	6,010,512		
		Lecturer	3	2	4,292	1.0%	1,933	\$41	0	0	176,952		
		Adjunct	137	27	42,144	10.2%	1,537	\$26	0	0	1,115,447		
		Grad Asst	957	301	88,313	21.4%	293	\$145	0	0	12,768,788		
		Misc Other	19	7	11,694	2.8%	1,633	\$53	0	0	619,899		
		<b>FL-SP Total</b>			<b>1,659</b>	<b>706</b>	<b>413,459</b>	<b>100.0%</b>	<b>586</b>	<b>\$146</b>	<b>13,616,416</b>	<b>19,295</b>	<b>60,217,695</b>
		SUMM											
		Professor	110	17	11,745	18.8%	684	\$224	0		2,626,393		
		Associate	78	11	9,850	15.8%	883	\$116	0		1,145,085		
		Assistant	87	12	6,119	9.8%	495	\$182	0		1,114,319		
		Instructor, Lect	62	11	14,093	22.6%	1,326	\$53	0		745,825		
		Adjunct	67	6	8,259	13.2%	1,417	\$28	0		234,709		
		Grad Asst	421	41	12,328	19.8%	304	\$151	0		1,855,704		
<b>SUMM TOTAL</b>			<b>825</b>	<b>98</b>	<b>62,394</b>	<b>100.0%</b>	<b>638</b>	<b>\$124</b>	<b>0</b>		<b>7,722,035</b>		
AY TOTAL			1,749	803	475,853		592	\$143	13,616,416		67,939,730		
NonInstructional Faculty	AY TOTAL	All	1,366	428	167,463				1,055,848		21,254,491		

College of Arts & Sciences - 2012-2013													
Instructor Grouping	Term Grouping	Faculty Group	Unique Record	Person Years (FTE)	SCH	%	SCH / FTE	Sal / SCH	Research Expenditures	Rsch / FTE	Term Salary w/ benefits		
Instructional Faculty	FL-SP	Professor	153	108	52,776	12.7%	488	\$336	6,723,430	62,139	17,738,392		
		Associate	153	109	51,440	12.4%	470	\$261	4,834,881	44,207	13,419,871		
		Assistant	111	81	41,248	9.9%	512	\$208	1,501,601	18,642	8,572,056		
		Instructor	131	90	138,963	33.5%	1,550	\$50	242,916	2,709	6,983,293		
		Lecturer	2	2	4,097	1.0%	2,731	\$24	0	0	98,488		
		Adjunct	134	26	45,312	10.9%	1,712	\$25	17,014	643	1,136,316		
		Grad Asst	951	302	80,516	19.4%	267	\$166	5,246	17	13,352,717		
		Misc Other	1	1	642	0.2%	867	\$110	0	0	70,482		
		<b>FL-SP Total</b>			<b>1,636</b>	<b>719</b>	<b>414,993</b>	<b>100.0%</b>	<b>578</b>	<b>\$148</b>	<b>13,325,088</b>	<b>18,544</b>	<b>61,371,615</b>
		SUMM	Professor	103	13	9,525	16.1%	708	\$266	0		2,533,996	
	Associate	84	9	10,049	17.0%	1,107	\$134	0		1,351,207			
	Assistant	82	8	6,391	10.8%	781	\$163	0		1,041,111			
	Instructor, Lect	55	8	10,314	17.4%	1,321	\$73	0		750,499			
	Adjunct	87	3	12,128	20.5%	3,505	\$28	0		340,647			
	Grad Asst	417	37	10,862	18.3%	297	\$181	0		1,970,257			
	<b>SUMM TOTAL</b>		<b>828</b>	<b>79</b>	<b>59,270</b>	<b>100.0%</b>	<b>754</b>	<b>\$135</b>	<b>0</b>		<b>7,987,717</b>		
	AY TOTAL		1,749	797	474,263		595	\$146	13,325,088		69,359,332		
NonInstructional Faculty	AY TOTAL	All	1,366	419	168,649				1,613,898		21,953,944		

9. Hiring Plan

Fall Faculty FTE by Tenure Status



TERM	TENURED	TENURE EARNING	NON TENURED	TOTAL	DETAIL
FALL 2009	266.10	111.33	84.30	461.73	<a href="#">DETAIL</a>
FALL 2010	251.16	128.38	119.21	498.75	<a href="#">DETAIL</a>
FALL 2011	244.16	125.75	121.79	491.70	<a href="#">DETAIL</a>
FALL 2012	267.64	119.35	136.04	523.03	<a href="#">DETAIL</a>
FALL 2013	249.68	100.13	122.45	472.26	<a href="#">DETAIL</a>